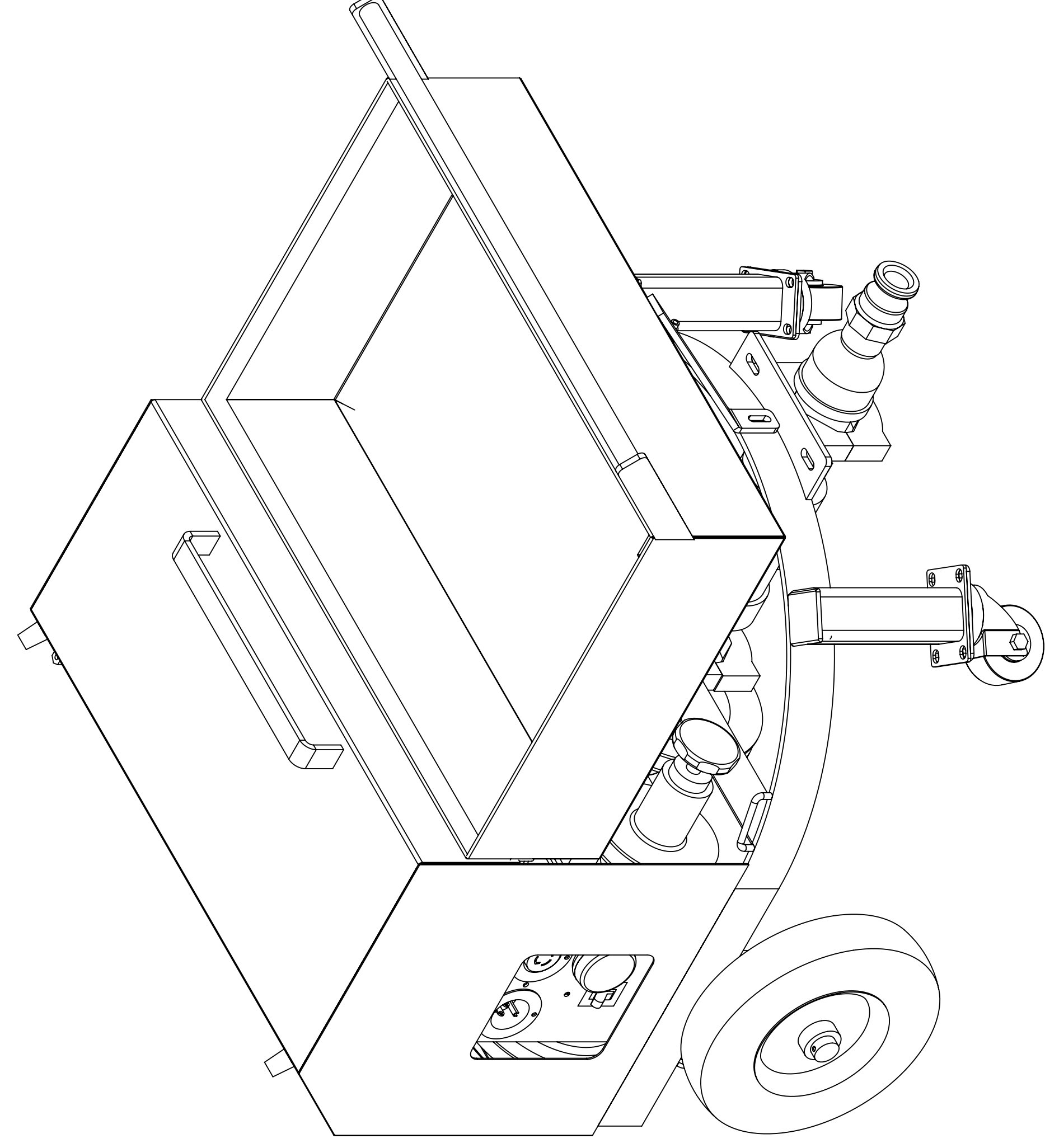
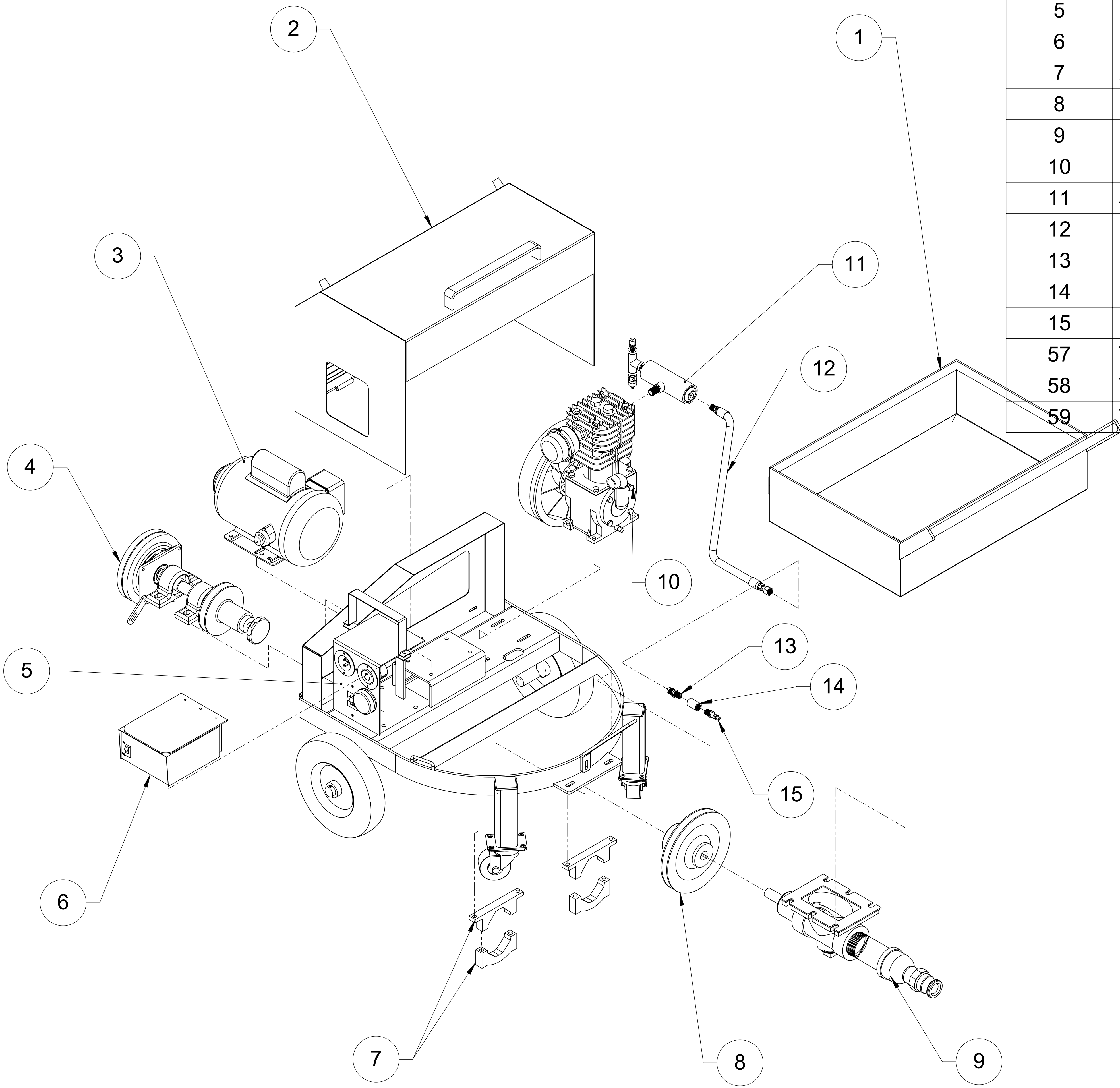


# Twister Assembly

## Parts Listing



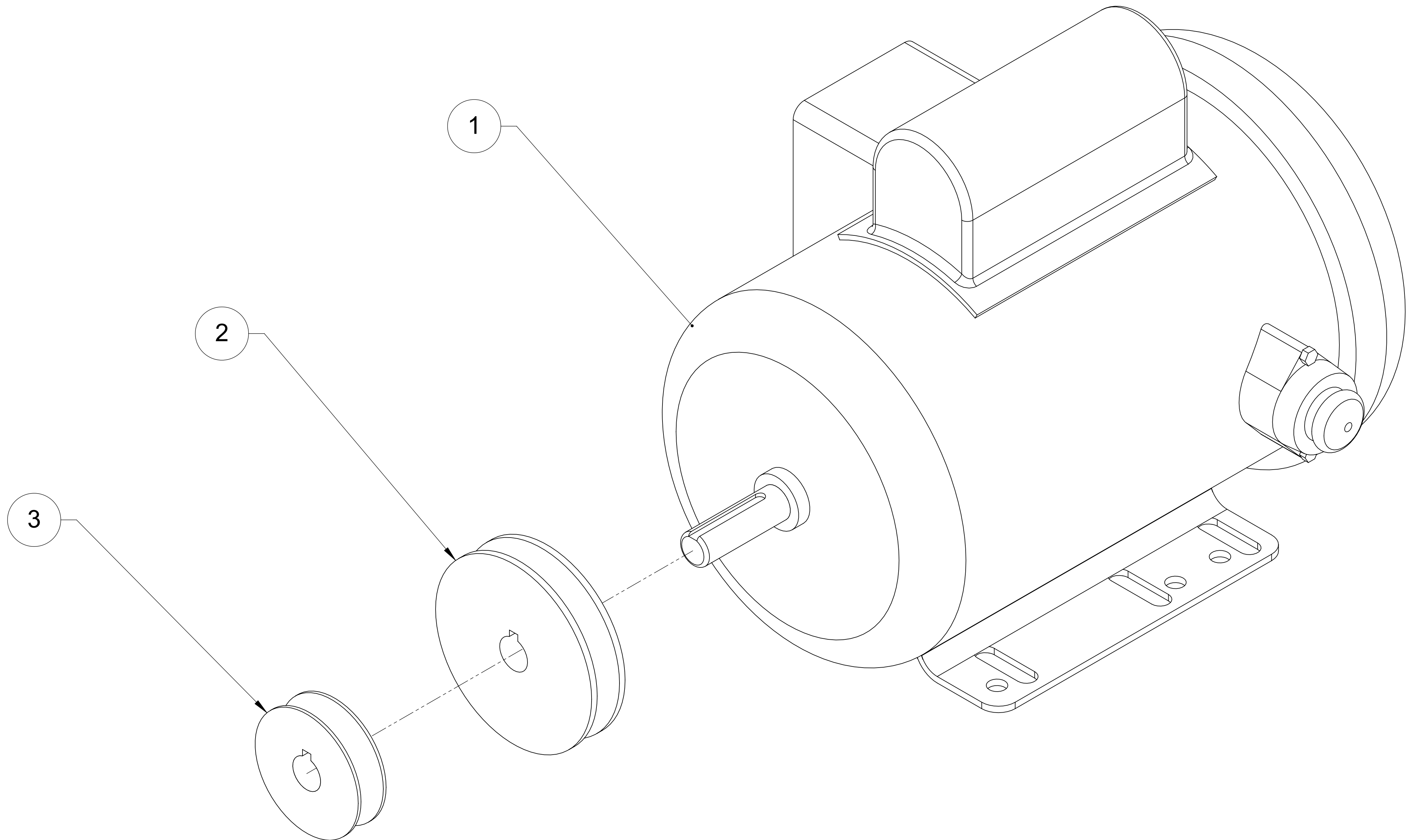


ITEM NO.	DESCRIPTION	PART NUMBER	QTY.
1	Hopper, 15 Gal. Twister	221027	1
2	Hood, Twister	221025	1
3	Electric Motor 1-HP Assembly	SEE DETAIL	1
4	Jackshaft and Clutch Assembly	SEE DETAIL	1
5	Control Panel Assembly	SEE DETAIL	1
6	115V To 12V Converter 6 Amp.	408131	1
7	2L3 Stator Tube Bracket	200046	2
8	8" SPR-LAD VAR-I-Speed Pulley	402100	1
9	Material Pump Assembly	SEE DETAIL	1
10	Compressor QTS-1 Assembly	SEE DETAIL	1
11	Air Tank Assembly	SEE DETAIL	1
12	3/8" x 16" Air Comp. Hose	415030	1
13	3/8" x 1/4" M Comp. Hose Fitting	415054	1
14	1/4" Coupler-Blk Steel	216024	1
15	1/4" QK Couple Stem M	414005	1
57	Tanks Side Plates(add 4in.)		1
58	Tanks Side Plates(add 4in.)		1
59	Wire Chase 5.8x5.8		1

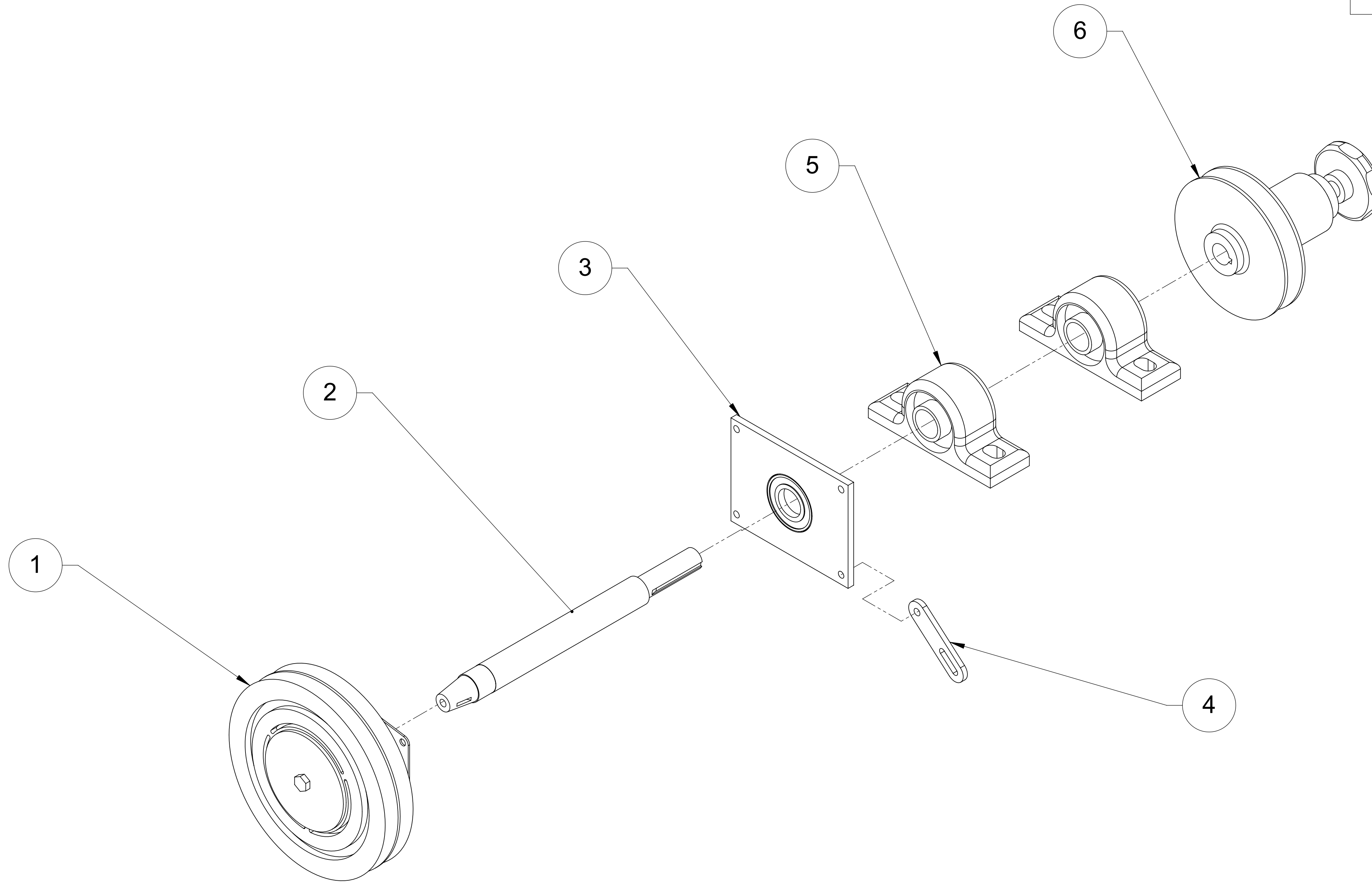
**TWISTER ASSEMBLY**

ITEM NO.	DESCRIPTION	PART NUMBER	QTY.
1	1 HP Motor 115V 1725RPM	215058	1
2	4-1/2" x 5/8" Pulley	402098	1
3	2-1/4" x 5/8" Pulley	402073	1

TWISTER ELECTRIC MOTOR 1-HP ASSEMBLY

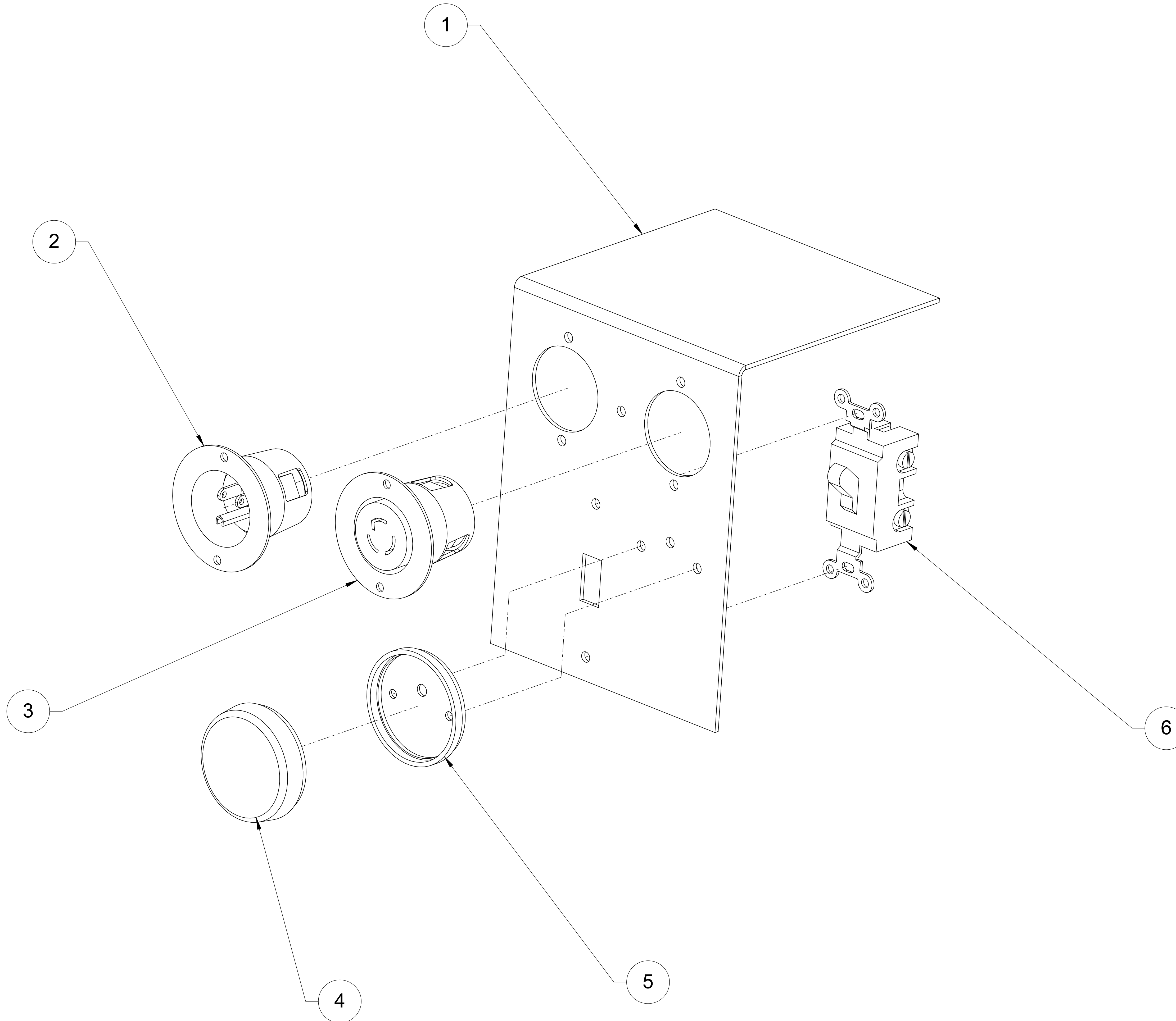


ITEM NO.	DESCRIPTION	PART NUMBER	QTY.
1	Electro Magnetic Clutch	403001	1
2	Jackshaft 1", Twister	203054	1
3	Bearing Plate W/ Bearing 6205	203041	1
4	Bearing Plate Anchor	203018	1
5	1" Pillow Block Bearing	403012	2
6		402094	1
8	Fuel Tank 6 Gal Assembly		1
9	Upper Battery Holder Carriage Bolt		2
		ASSEMBLY	
10	Nut		2
11	Hydra Bonnet Spacer		2

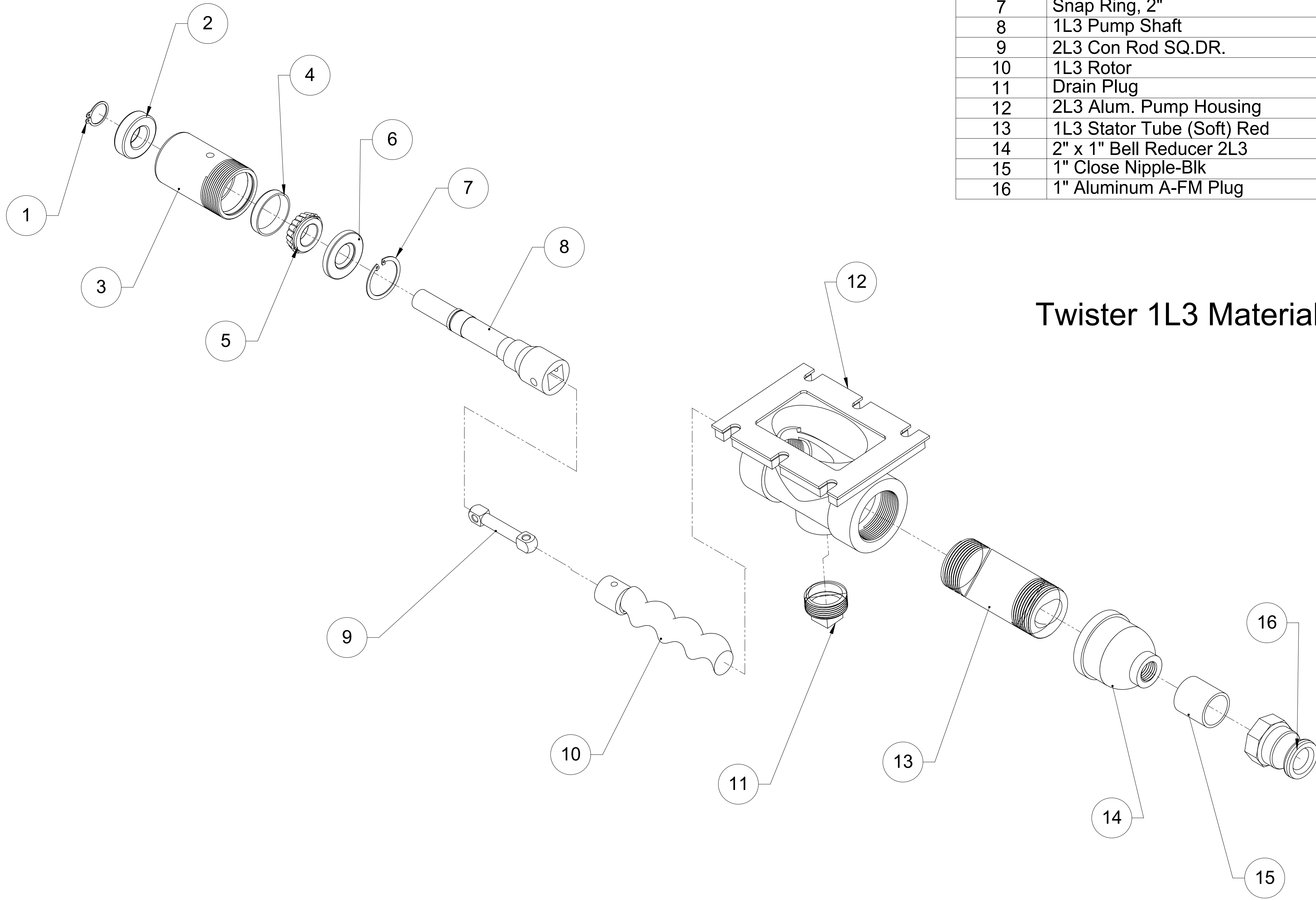


ITEM NO.	DESCRIPTION	PART NUMBER	QTY.
1	)	208017	1
2	3 Way Receptacle-M	408046	1
3	3 Way Receptacle-F	408047	1
4	Indicator Lens	408036	1
5	Red Indicator Light	408015	1
6		408006	1

### Twister Control Panel



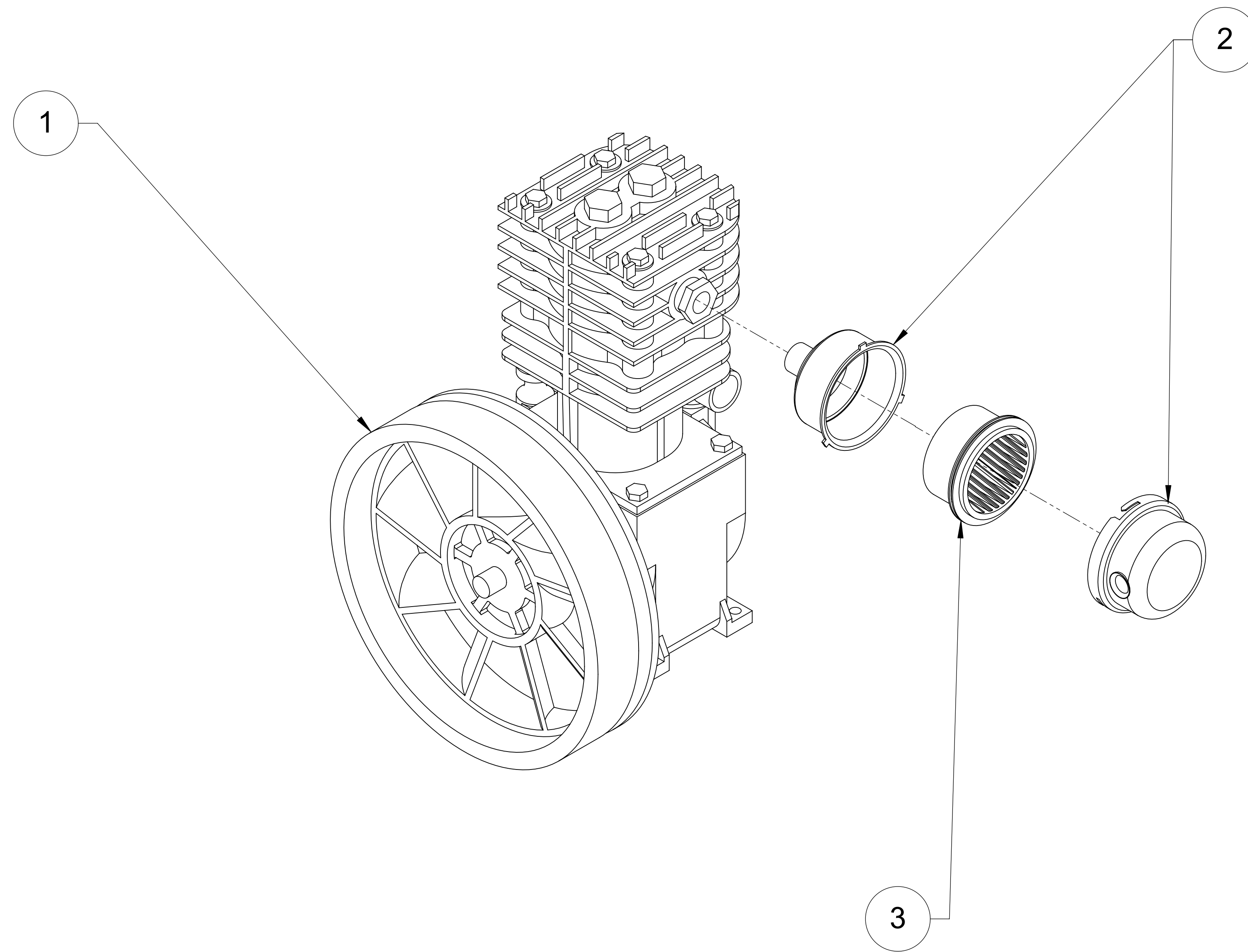
ITEM NO.	PART NUMBER	DESCRIPTION	QTY.
1	Snap Ring	400024	1
2	Bearing	400027	1
3	L4 Pump Cartridge Housing	200207	1
4	Bearing, Race	400063	1
5	Bearing, Roller	400062	1
6	Seal, Roller Bearing	400064	1
7	Snap Ring, 2"	400065	1
8	1L3 Pump Shaft	200228	1
9	2L3 Con Rod SQ.DR.	200089	1
10	1L3 Rotor	200227	1
11	Drain Plug	400019	1
12	2L3 Alum. Pump Housing	200085	1
13	1L3 Stator Tube (Soft) Red	200226	1
14	2" x 1" Bell Reducer 2L3	400015	1
15	1" Close Nipple-Blk	216123	1
16	1" Aluminum A-FM Plug	419032	1



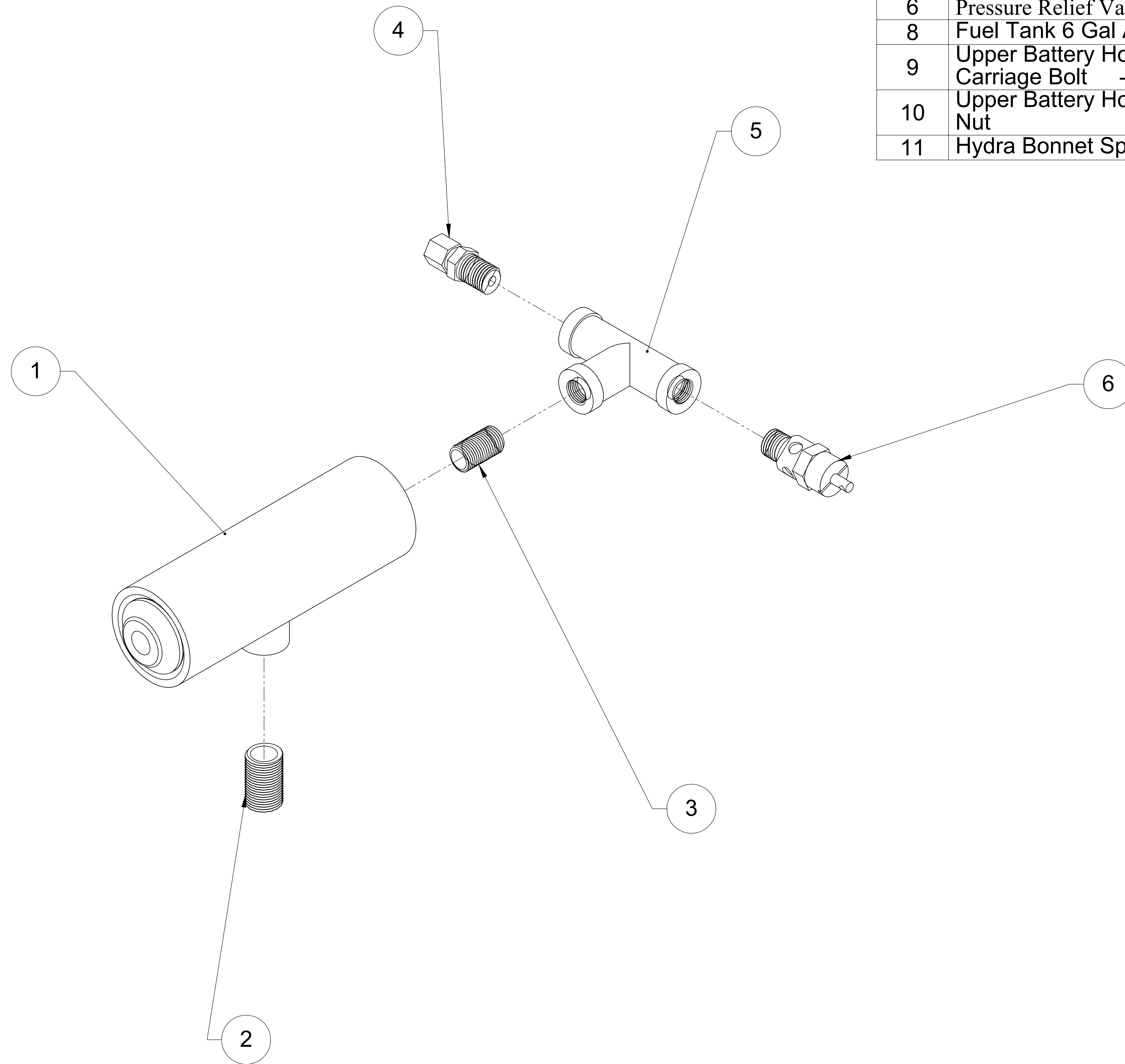
**Twister 1L3 Material Pump Assembly**

ITEM NO.	DESCRIPTION	PART NUMBER	QTY.
1	Compressor QTS-1 Quincy	215035	1
2	Air Cleaner Assy.QTS-3	215220	1
3	Air Cleaner Element QTS-3	215221	1
10	1.2in X 24in Comp. Hose Assy.		1

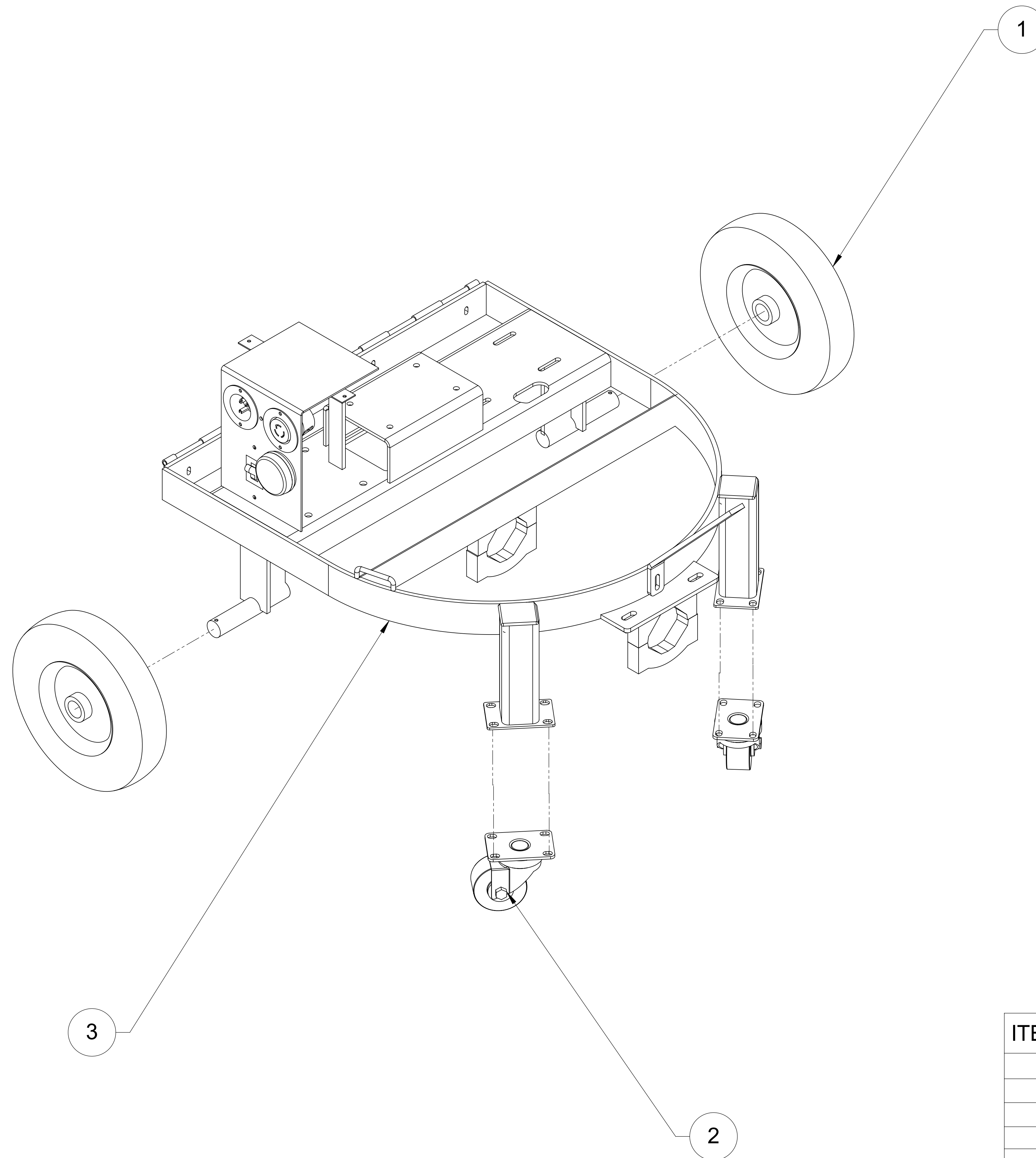
### Twister Compressor QTS-1 Assembly



ITEM NO.	DESCRIPTION	PART NUMBER	QTY.
1	Air Receiver Tank (Twister)	215002	1
2	3/8" Close Nipple-Blk	216076	1
3	1/4" Close Nipple-Blk	216023	1
4	1/4" Compressor Fitting	415021	1
5	1/4" Tee-Blk	216028	1
6	Pressure Relief Valve 150 PSI	415062	1
8	Fuel Tank 6 Gal Assembly		1
9	Upper Battery Holder Carriage Bolt	Twister Air Tank Assembly	2
10	Upper Battery Holder Wing Nut		2
11	Hydra Bonnet Spacer		2







### TWISTER FRAME ASSEMBLY

ITEM NO.	DESCRIPTION	PART NUMBER	QTY.
1		421019	2
2		404108	2
3	Twister Frame	260001	1
31	Frame Hydraulic Clamp		2
32	HTNut 3.4-10-D-N		2